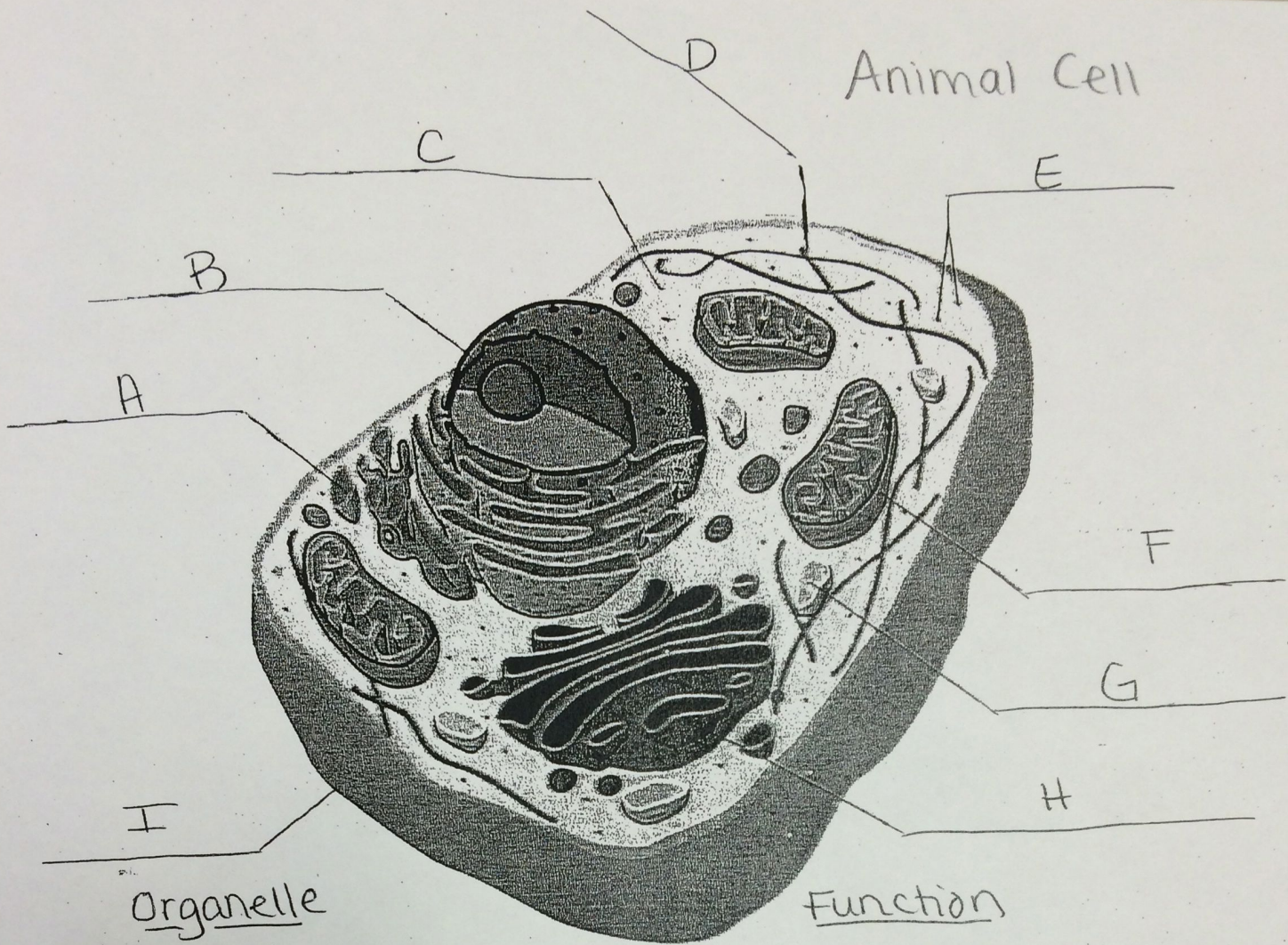


Animal Cell



Organelle

Function

- | | |
|---------------------------------|---|
| A. <u>Endoplasmic Reticulum</u> | : <u>highway from nucleus to membrane</u> |
| B. <u>Nucleus</u> | : <u>houses DNA; control center (brain of cell)</u> |
| C. <u>cytoplasm</u> | : <u>provides cell shape and structure</u> |
| D. <u>cytoskeleton</u> | : <u>fluid inside the cell</u> |
| E. <u>ribosomes</u> | : <u>protein factory; DNA codes for protein</u> |
| F. <u>mitochondrion</u> | : <u>energy source / powerhouse of cell</u> |
| G. <u>Lysosome</u> | : <u>breakdown unwanted material</u> |
| H. <u>Golgi Body</u> | : <u>stores, sends and customizes protein</u> |
| I. <u>cell membrane</u> | : <u>controls what enters and exits the cell</u> |